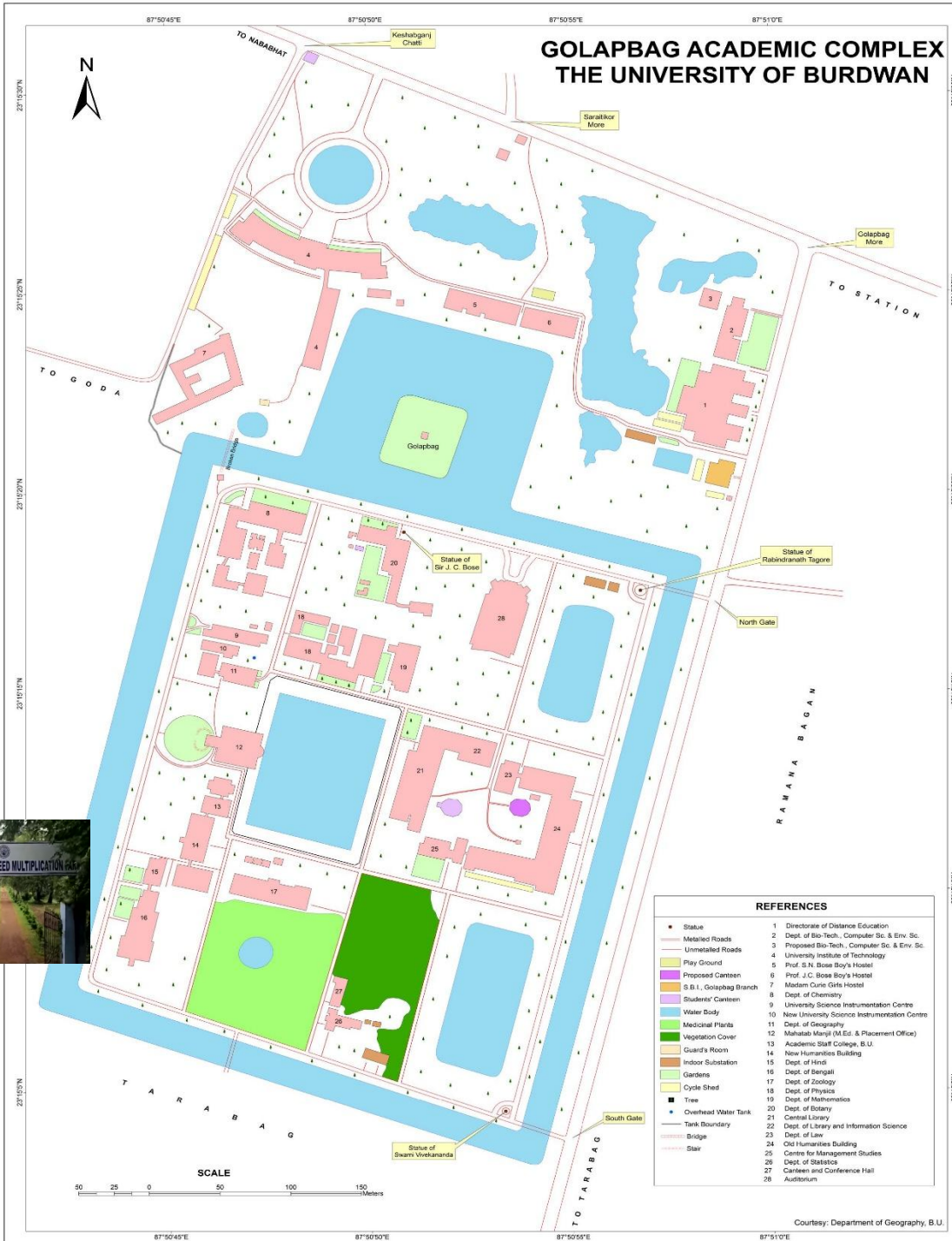


# Solid Waste Management at Crop Research and Seed Multiplication Farm







7R2V+W4P, Goda, Burdwan, West Bengal 713104, India

	Decimal	DMS	
Latitude	23.252044	23°15'7" N	25°C 77°F
Longitude	87.842852	87°50'34" E	

2021-12-17(Fri) 01:46(pm)



7R2V+W4P, Goda, Burdwan, West Bengal 713104, India

	Decimal	DMS	
Latitude	23.252092	23°15'7" N	25°C 77°F
Longitude	87.842868	87°50'34" E	

2021-12-17(Fri) 01:45(pm)



7R2V+W4P, Goda, Burdwan, West Bengal 713104, India

	Decimal	DMS	
Latitude	23.252407	23°15'8" N	25°C 77°F
Longitude	87.843018	87°50'34" E	

2021-12-17(Fri) 01:53(pm)



7R2V+W4P, Goda, Burdwan, West Bengal 713104, India

	Decimal	DMS	
Latitude	23.252204	23°15'7" N	25°C 77°F
Longitude	87.842961	87°50'34" E	

2021-12-17(Fri) 01:44(pm)

## Solid Waste Management

[23.252044,](#)

[87.842852](#)

[7R2V+R49 Burdwan, West Bengal](#)

# Environmental Consciousness and Sustainability

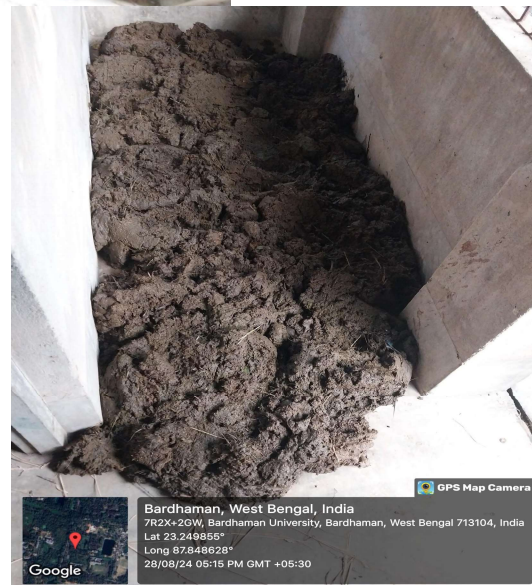
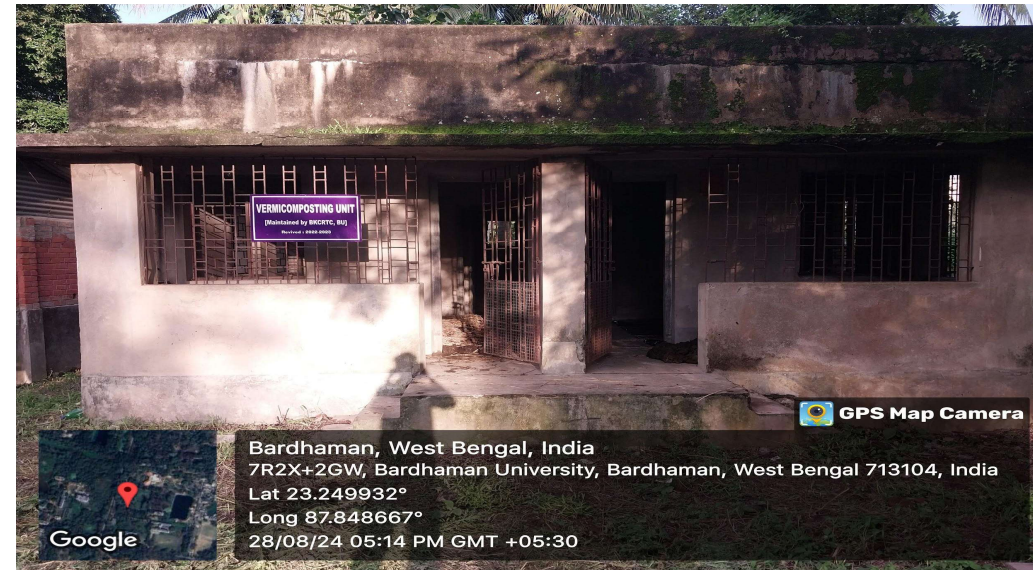
7.1.3

Describe the facilities in the Institution for the management of the following types of degradable and non-degradable waste (within 500 words)

4

QIM

- Solid waste management



## Environmental Consciousness and Sustainability

7.1.3

Describe the facilities in the Institution for the management of the following types of degradable and non-degradable waste (within 500 words)

4

QIM

- Solid waste management

