

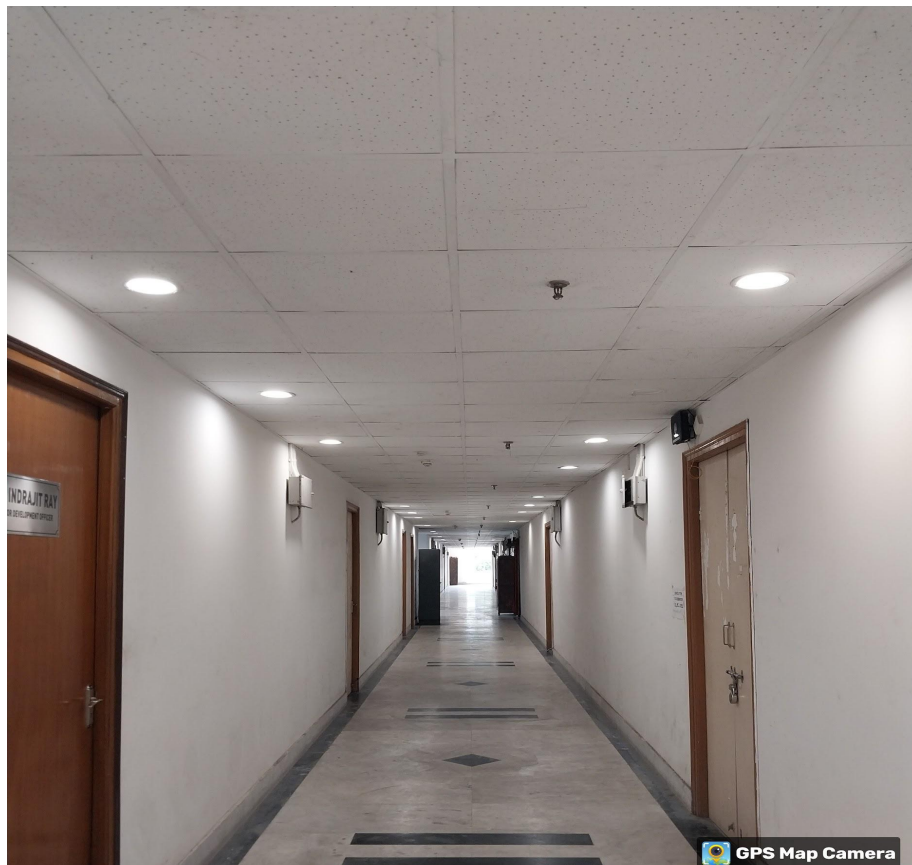
Environmental Consciousness and Sustainability

7.1.2
QnM

The Institution has facilities for alternative sources of energy and energy conservation measures

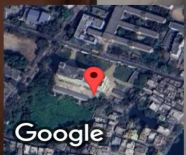
5. Use of LED bulbs/power efficient equipment

5



GPS Map Camera

Bardhaman, West Bengal, India
6VW3+HJF, Aftab Ave, Bardhaman University, Bardhaman, West Bengal
713104, India
Lat 23.246347°
Long 87.853505°
08/08/24 03:44 PM GMT +05:30



Google



GPS Map Camera

Bardhaman, West Bengal, India
6VW3+HJF, Aftab Ave, Bardhaman University, Bardhaman, West Bengal
713104, India
Lat 23.246347°
Long 87.853505°
08/08/24 03:44 PM GMT +05:30



Google

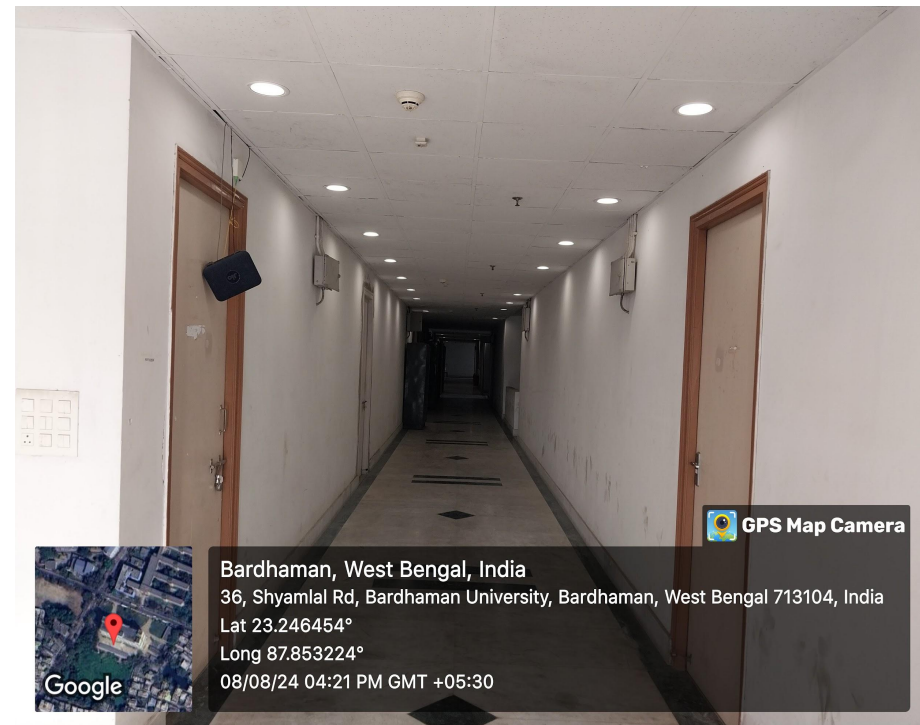
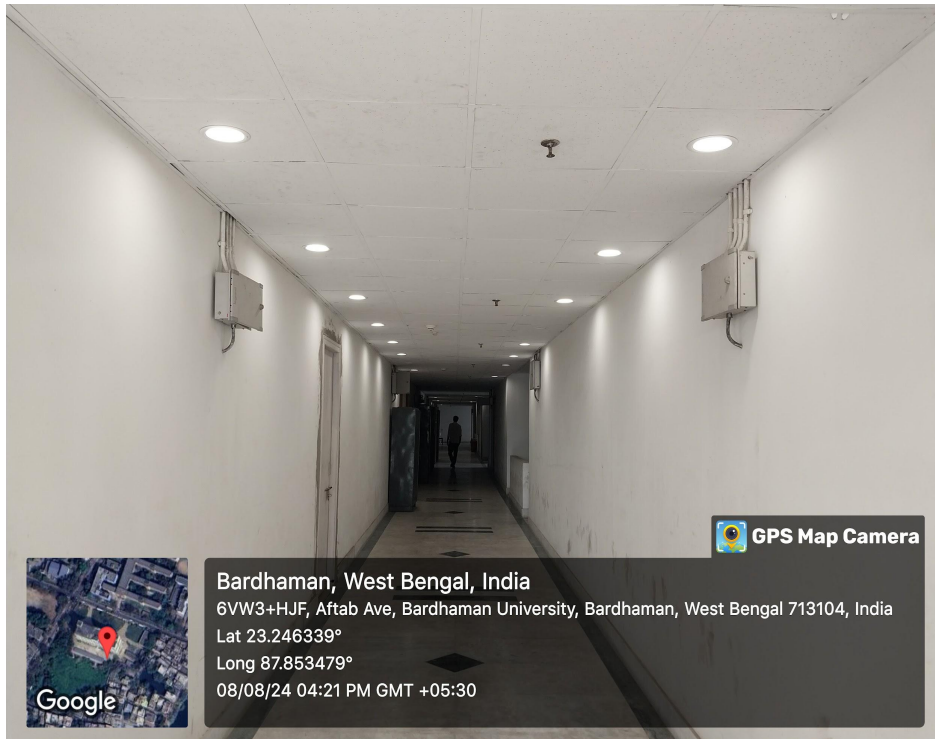
Environmental Consciousness and Sustainability

7.1.2
QnM

The Institution has facilities for alternative sources of energy and energy conservation measures

5. Use of LED bulbs/power efficient equipment

5



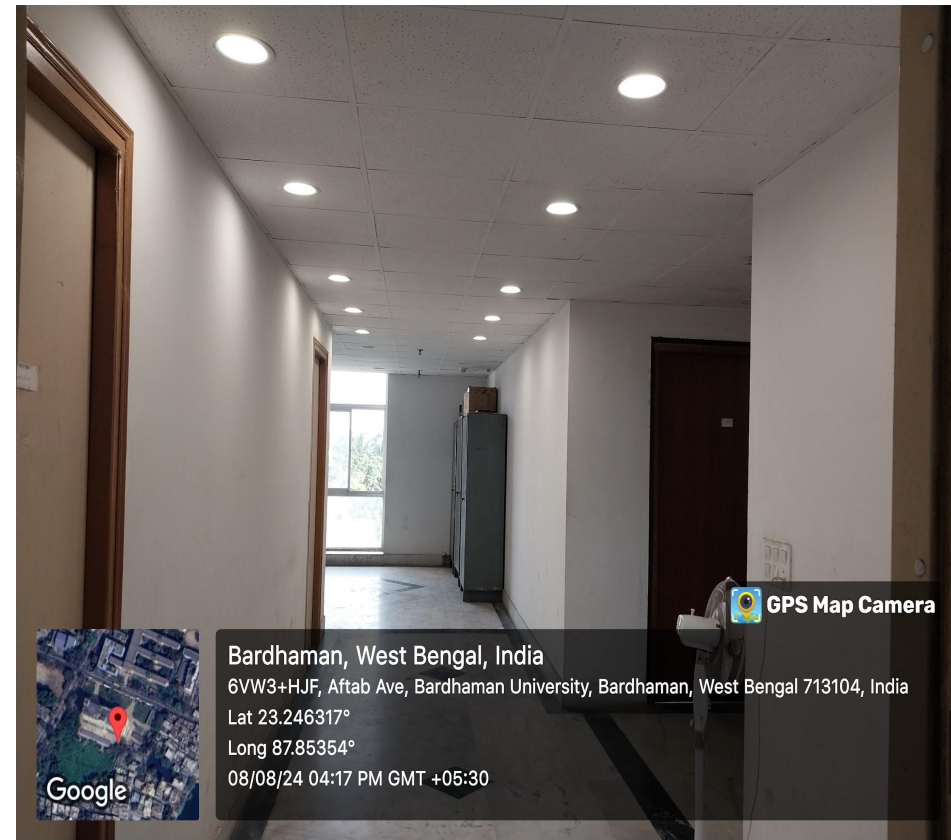
Environmental Consciousness and Sustainability

7.1.2
QnM

The Institution has facilities for alternative sources of energy and energy conservation measures

5. Use of LED bulbs/power efficient equipment

5



Environmental Consciousness and Sustainability

7.1.2
QnM

The Institution has facilities for alternative sources of energy and energy conservation measures

5. Use of LED bulbs/power efficient equipment

5



Environmental Consciousness and Sustainability

7.1.2
QnM

The Institution has facilities for alternative sources of energy and energy conservation measures

5. Use of LED bulbs/power efficient equipment

5



Environmental Consciousness and Sustainability

7.1.2
QnM

The Institution has facilities for alternative sources of energy and energy conservation measures

5. Use of LED bulbs/power efficient equipment

5

